

Introduction to Climate Resilient Low Emission Development Strategies

Ron Benioff
Director, LEADS Global Partnership

April 16, 2015
Marrakech, Morocco



LEADS Global Partnership

LEADS GP Catalyzes Action and Collaboration Across more than 160 Countries and International Organizations



REGIONAL PLATFORMS
Define priorities and conduct peer learning and collaboration



GLOBAL WORKING GROUPS
Provide technical support and training



LEADS GP SECRETARIAT & STEERING COMMITTEE

Expert Assistance on LEADS for Governments

-  **Planning and Subnational Integration –**
-  **Analysis Tools –** Benefits assessment and Option analysis
-  **Finance –** Investment instruments, Public funds allocation, Donor financing
-  **Sectors –** AFOLU, Energy, Transport, Waste (with CCAC)



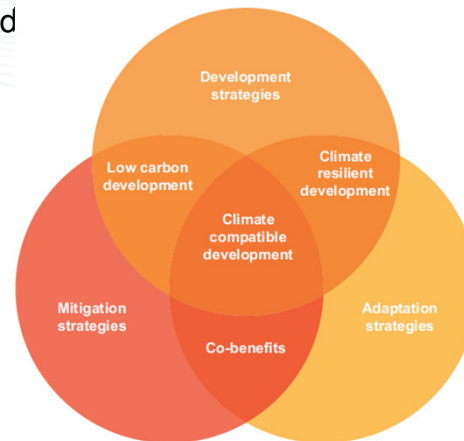
What is a LEDS?

A **Low Emission Development Strategy (LEDS)** is a country led strategic plan to achieve sustainable development, reduce greenhouse gas (GHG) emission trajectories and enhance resiliency to climate change impacts.



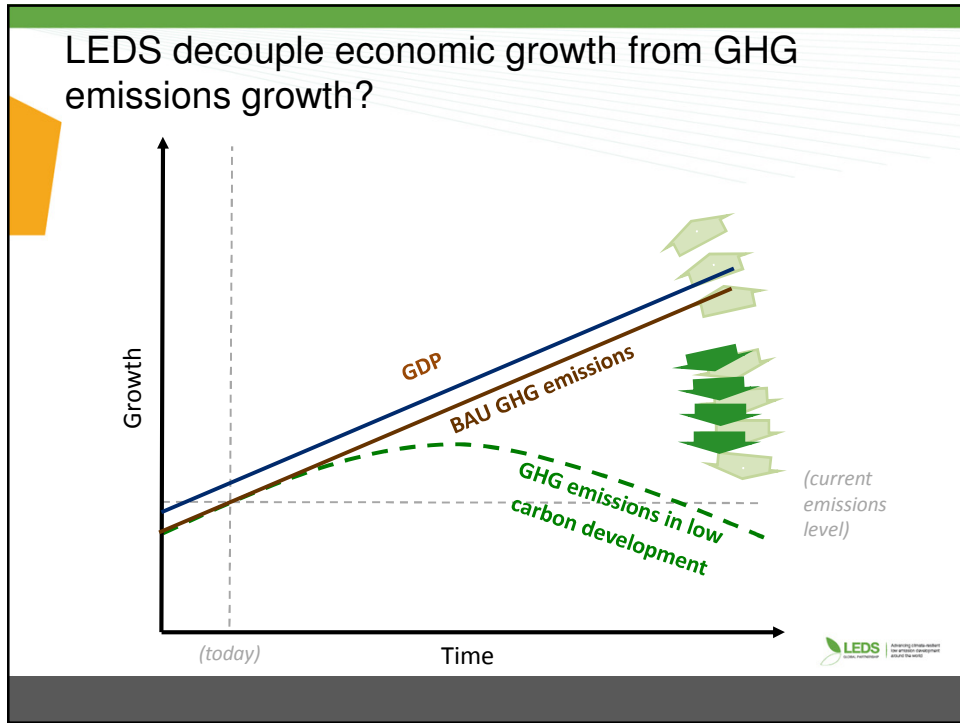
LEDS and Related Plans and Strategies

- Not all countries have a formal document or process called a “LEDS”
- However, many countries are incorporating LEDS-type concepts into other planning mechanisms, e.g.,
 - Green growth
 - Sustainable development
 - Climate change resilience and response
 - Clean energy and sustainable land use









Source: adapted from Zadek, 2009, and informal communication with staff from the UK Department for International Development

Regardless of their name, LEDS are distinguished by their focus on both *enhancing development* and *reducing GHG emissions*.



What can low emission development mean for your country?

-  **Increased energy security**
-  **Improved health and economic activity from less pollution**
-  **Increased industrial efficiency and productivity**
-  **New economic opportunities, employment, and poverty reduction**
-  **Contribution to global effort toward GHG emission reduction and enhanced climate resiliency**





Example of LEDS Processes

- **Ethiopia's Climate Resilient Green Economy Strategy**
 - Emphasizes integration of green growth and climate resilience
 - Seeks to achieve significant carbon neutral increases in per capita GDP to support economic and social development goals
- **South Africa's National Climate Change Response Strategy**
 - Aligns closely with the GoSA's National Development Plan 2030 and emphasizes job creation
 - Focuses on poverty, welfare and social equity impacts of proposed actions to ensure alignment with broader social development goals
- **Kenya National Climate Change Action Plan**
 - Aligns with Vision 2030 National Development Plan with a goal to become "a newly industrialising, middle-income country providing a high quality of life to all its citizens in a clean and secure environment"
 - Address concerns related to droughts and flooding through ensuring climate resilience
 - Contribute to global GHG emission reduction goals

Slide 7

- 8 Add in African examples
Benioff, Ron; 13/08/2014



Many countries have organized LEDS in 5 steps:

LEDS Planning & Coordination	Assess the Current Situation	Analyze Options	Prepare Prioritized Action Plans	Implement and Monitor
<ul style="list-style-type: none"> • Set up a Vision linked to National Development Goals • Define a multi-stakeholder participatory planning process at the national and subnational level • Assessing and Communicating Benefits 	<ul style="list-style-type: none"> • Analyze existing climate change related plans, programs and policies • Define strengths and weaknesses of existing local capacity • Assess available resources and analyze data 	<ul style="list-style-type: none"> • Establish Business-as-Usual scenario for GHG Emissions & develop low carbon scenarios 	<ul style="list-style-type: none"> • Development of implementation and finance plans 	<ul style="list-style-type: none"> • Mobilize finance • Implement actions and policies across agencies and levels of govt. • Monitoring, reporting and verification and adjustment

LEDS Low Emission Development Strategy

Key Challenges with LEDS

- Building the development case
- Securing support of political leaders and key stakeholders
- Mainstreaming with current development plans with active engagement of key ministries
- Robust analysis of options and policy design
- Translating plans into action
- Integration with related climate change programs